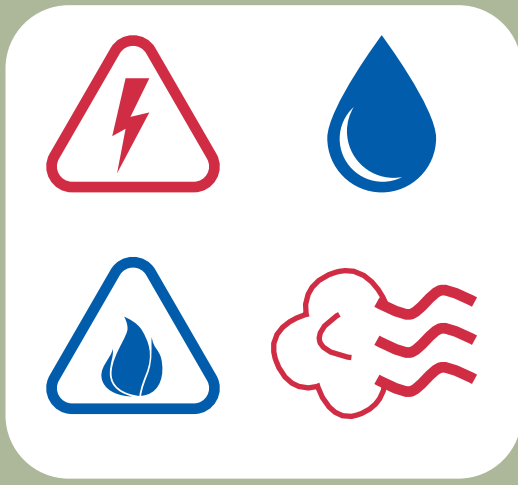


Lock Out Tag Out

Bloqueo y etiquetado

1. Identify

Identificar



Lock Out
Tag Out
Procedure

2. Locate

Localizar



Lock Out
Tag Out
Procedure

3. Notify

Notificar



Lock Out
Tag Out
Procedure

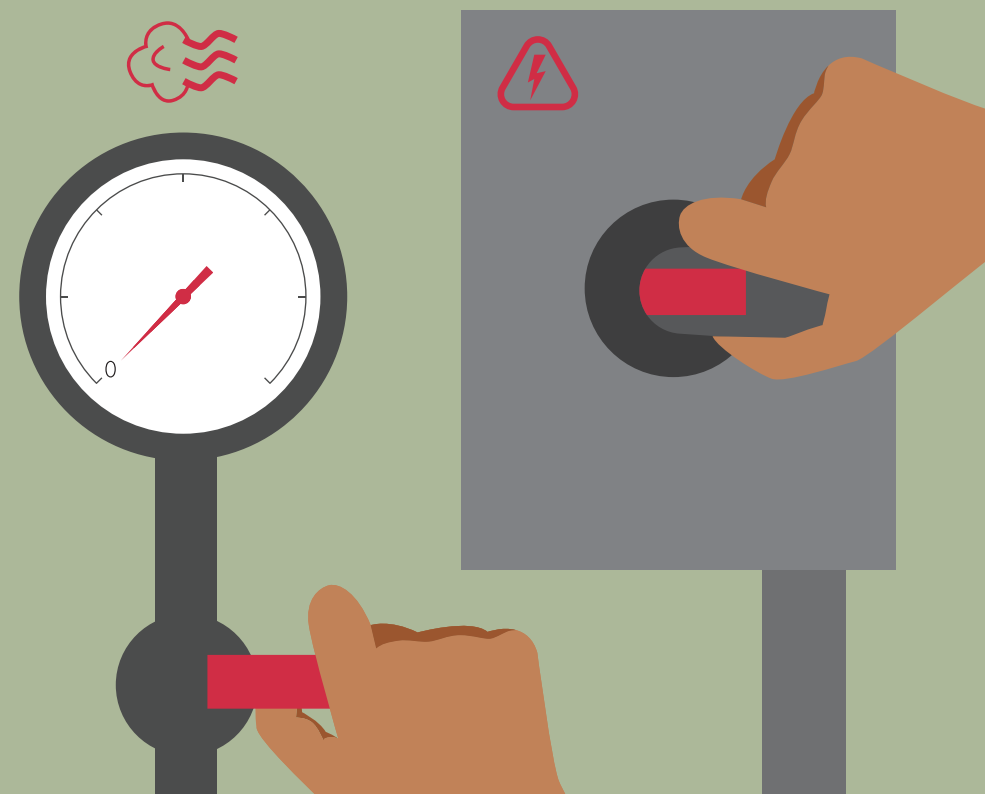
4. De-Energize

Desenergizar



5. Isolate

Aislar



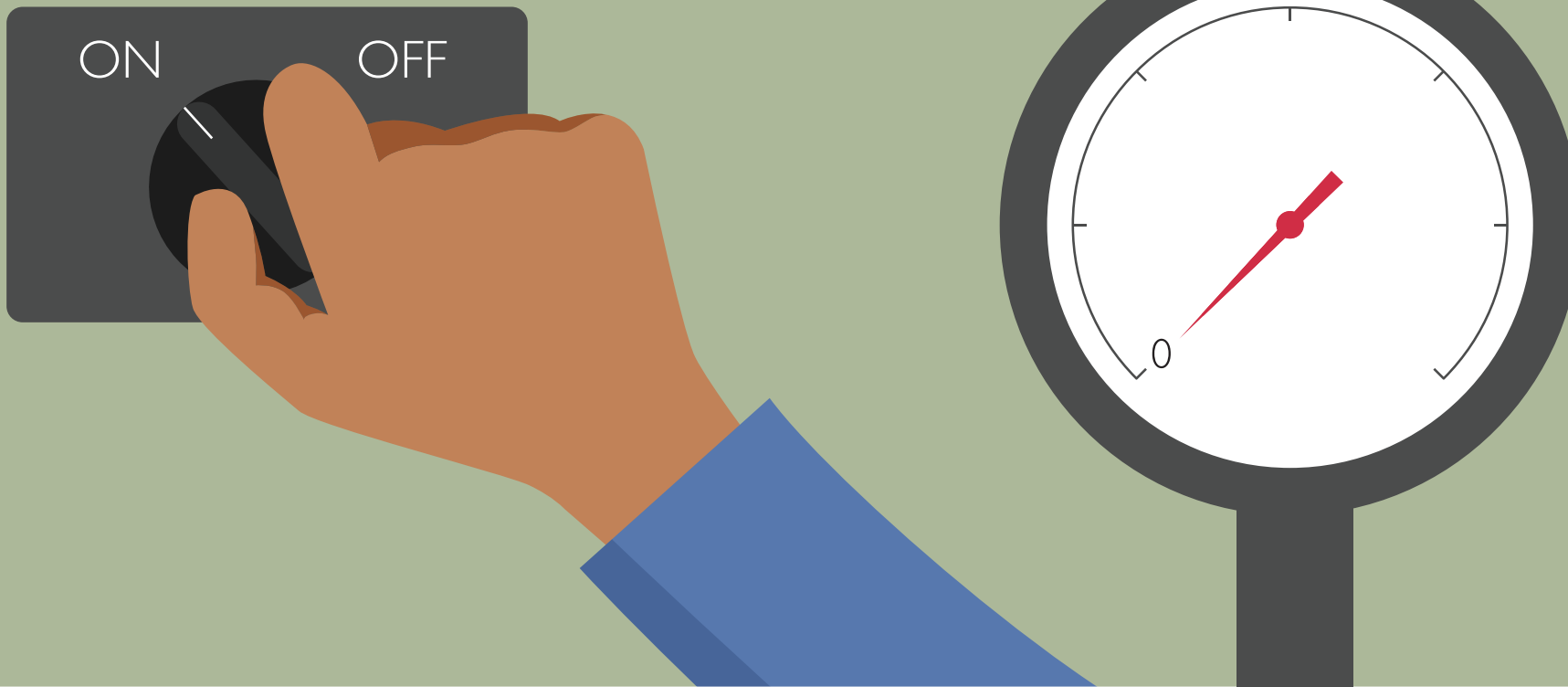
6. Lock Out

Cierre patronal



7. Test

Prueba



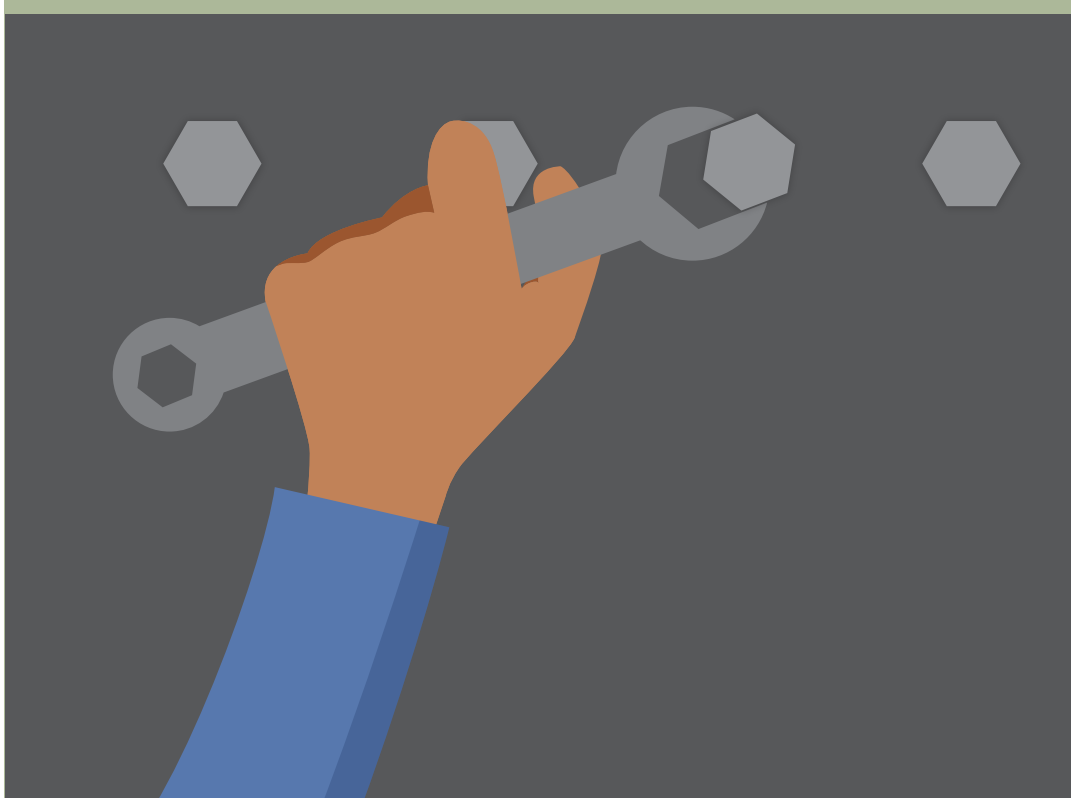
8. Return to Off

Regresar a Desactivado



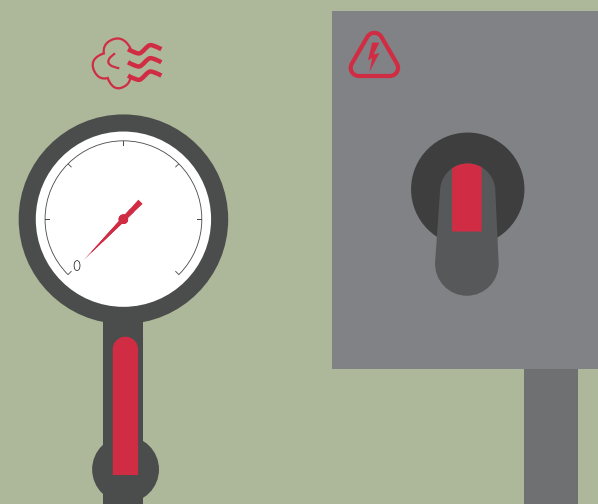
9. Perform

Realizar



10. Remove & Notify

Eliminar y Notificar



Lock Out Tag Out

USPOULTRY
U.S. POULTRY & EGG ASSOCIATION